



OFF THE GRID AND INTO THE MAYAN JUNGLE





## TABLE OF CONTENTS

---

- 5 / Overview of Mexico and the State of Yucatán
- 6 / Chocholá Review
- 7 / Location
- 9 / Residential Product Presentation
- 30 / Chablé Membership
- 33 / Lifestyle & Amenities Offered by the Development
- 39 / The Future of Chablé



# MÉXICO

A LAND OF SPIRITED COLORS,  
INTENSE FLAVORS AND  
UNIQUE HISTORY

What comes to mind when you hear ‘Mexico’? It boasts such a rich culture, that a thousand different things could cross your head. Renowned around the world for its natural wonders, vibrant traditions and warm hospitality, Mexico means something different for everyone. However, a common thread shines through: it’s an unforgettable, inimitable place. From the myriad of dishes its cuisine has to offer to its centuries-old architecture and modern cities, Mexico knows the way to your heart.

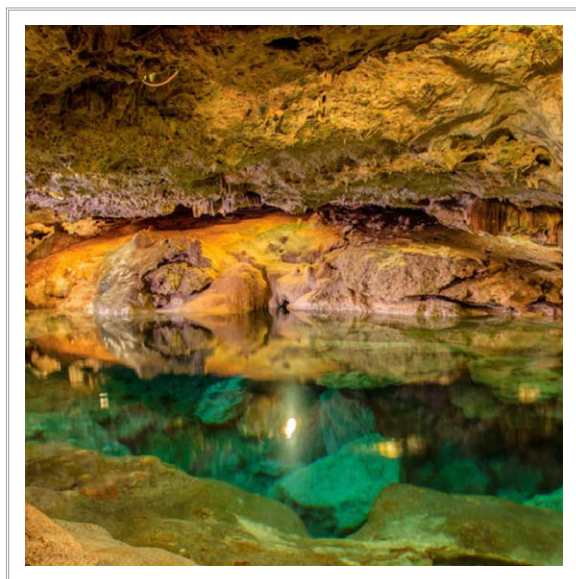


## YUCATÁN

MAGIC, MYSTICISM AND NATURE  
WELCOME YOU TO **THIS EARTHLY PARADISE.**

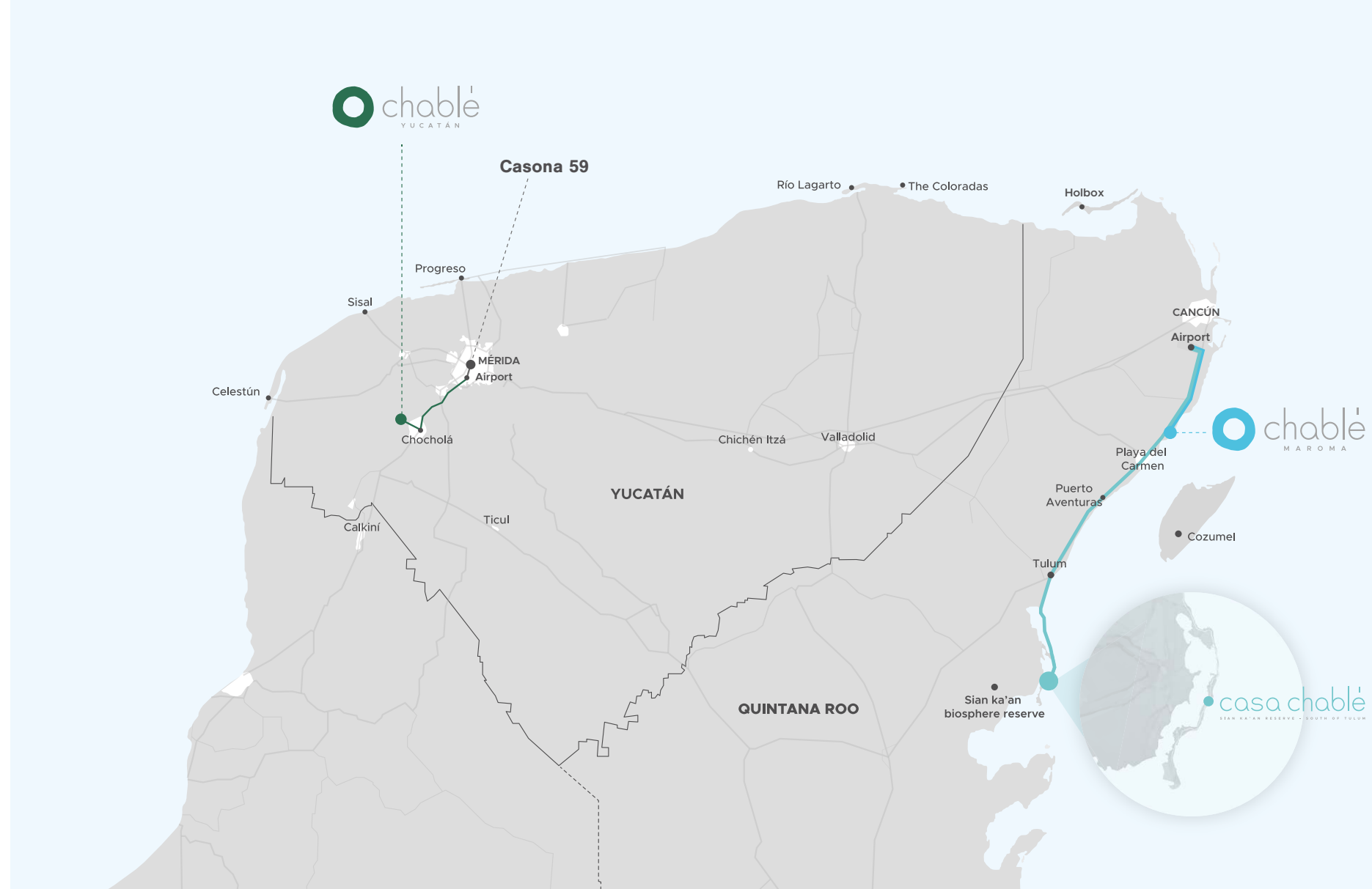
A perfect destination for thrill seekers and laid-back travelers alike, Yucatán is plentiful in both history and nature. Located in southeastern Mexico, it stands out by virtue of its exuberant scenery—a unique ecosystem where a flourishing jungle dotted with archeological sites and underwater caves meets white-sand beaches and turquoise waters. Explore the Mayan ruins to immerse yourself in the legacy of their culture, take in the beauty of its world-famous cenotes and be amazed by its distinctive flavors.





## CHOCHOLÁ

16 miles southwest of Mérida, along the road to the city of Campeche and not far from the Chicxulub crater, lies the town of Chocholá. Surrounded by majestic jungle, under the sublime Yucatecan blue sky, it comes to life by way of the San Ignacio Cenote, believed to provide energy and renovate the soul through its crystalline waters. Its name pays tribute to this feature– Chocholá means brackish water in Mayan.



## LOCATION ATTRIBUTES

Year-round warm weather means evergreen landscapes. Explore both the Mayan and colonial legacy of the property, as well as untouched natural areas. At night, enjoy unique star-gazing opportunities thanks to its secluded location.





\*This is a render and is subject to change

## RESIDENCES

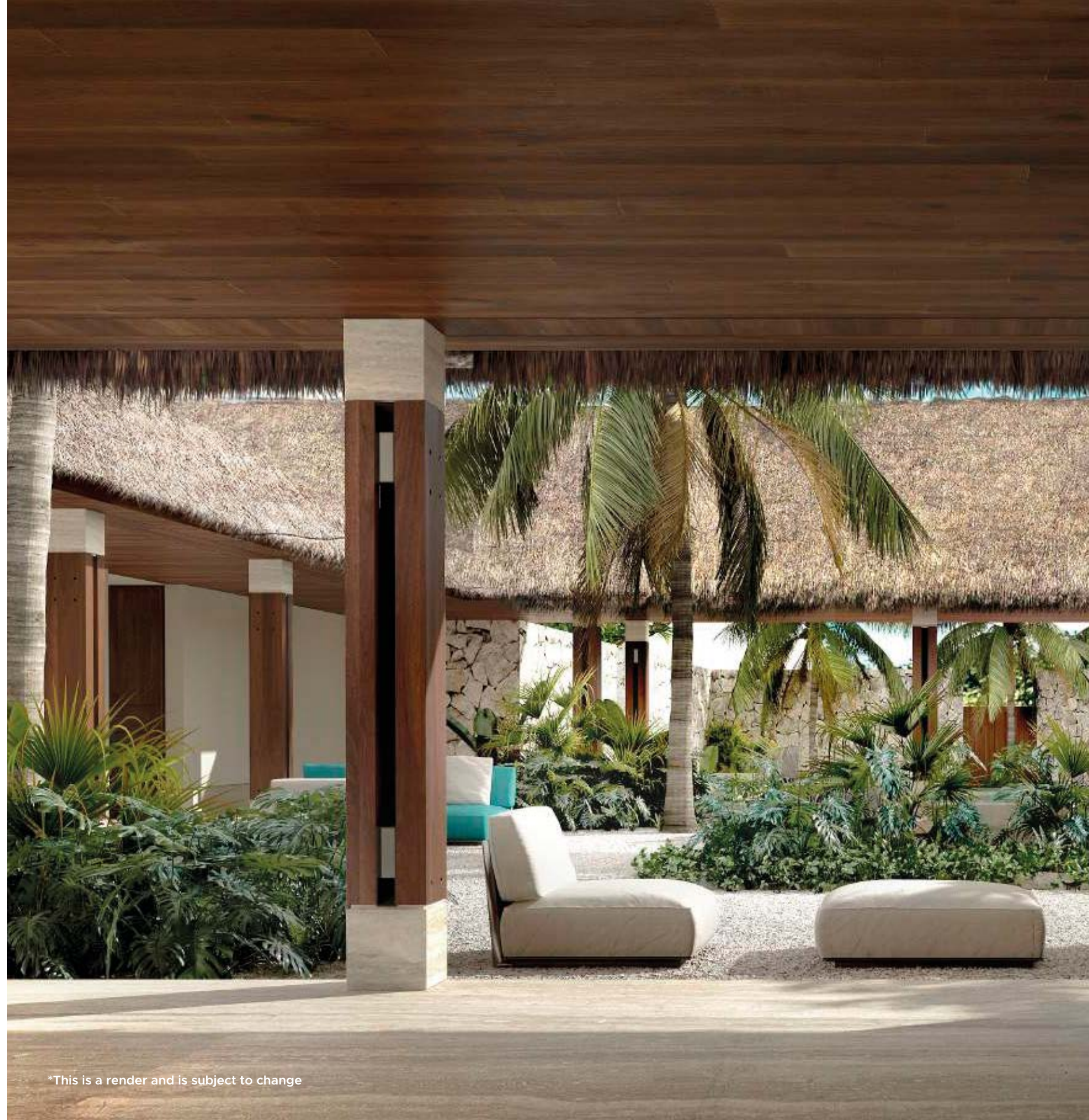
A FLOURISHING PARADISE  
**AT YOUR DOORSTEP**

Wake up to birds singing. Take a dip in your private plunge pool. Cuddle in the comfiest bed. An expansive jungle calls for an equally monumental home. Here, we offer you a secluded retreat among the vegetation, where a private and silent atmosphere reigns, allowing you to take a break from the stress of city life.



## TRIED-AND-TRUE BUILDING TECHNIQUES FOR INCREASED SUSTAINABILITY

To protect the jungle from unnecessary waste and carbon emissions while looking for solutions to keep the villas fresh, Chablé Yucatán Residences took a page from the Mayan book. By raising them five feet above ground level, wind currents have an unobstructed way in, thus cooling each room without relying completely on an AC system—and this keeps bugs out too!



\*This is a render and is subject to change





\*This is a render and is subject to change

## ARCHITECTURE IMITATES ART BRINGING TOGETHER BAUHAUS IDEAS AND MAYAN KNOW-HOW

Up-and-coming Mexican architect José Carlos Lombana is the mastermind behind the residences. To find balance, he drew from the work of Josef Albers, a German-American painter. This artist found a new home across the Atlantic and an infinite source of inspiration in the thriving Mexican art scene and the vestiges of the Mayan world.

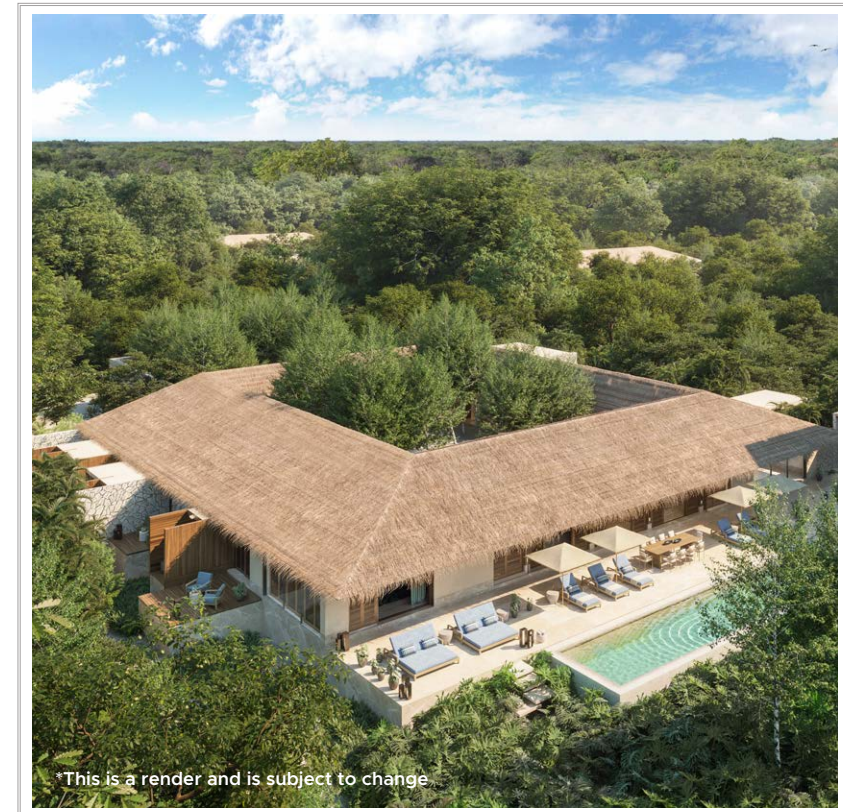
One of his key works, a series of paintings titled “Homage to the Square”, features an apparently simple composition. However, it is an abstract depiction of a birds-eye view of Mesoamerican pyramids. This element spurred the 3-2-1 proportions in the architectural design of each building, creating wide open spaces while also paying a tribute to local construction techniques.







\*This is a render and is subject to change



At Chablé Yucatán Residences, style and nature coalesce in refreshing spaces that take into account the lush landscape that surrounds each villa. The high ceilings, floor-to-ceiling windows, wood finishes and concrete accents allow each residence to blend in seamlessly with the environment and double as a frame to the greenery that makes this a truly magical place.

From a quiet afternoon snuggle by the pool or a mellow movie night to an exciting dining opportunity or the thrill of stargazing from your very own observation deck, an extended stay at your residence will offer plenty of time for you to try new things you can only experience here.



Being this close to nature and far away from urban centers doesn't mean having to compromise your comfort. Our sleek residences are furnished with top-of-the-line appliances and furniture.



The residences' decor, brought to life by award-winning interior designer **Paulina Morán**, marries style and Mexican traditions to turn these ultra modern residences into warm, welcoming spaces.

\*This is a render and is subject to change





\*This is a render and is subject to change

## FAMILY VILLA

### 3-BEDROOM SINGLE-LEVEL VILLA

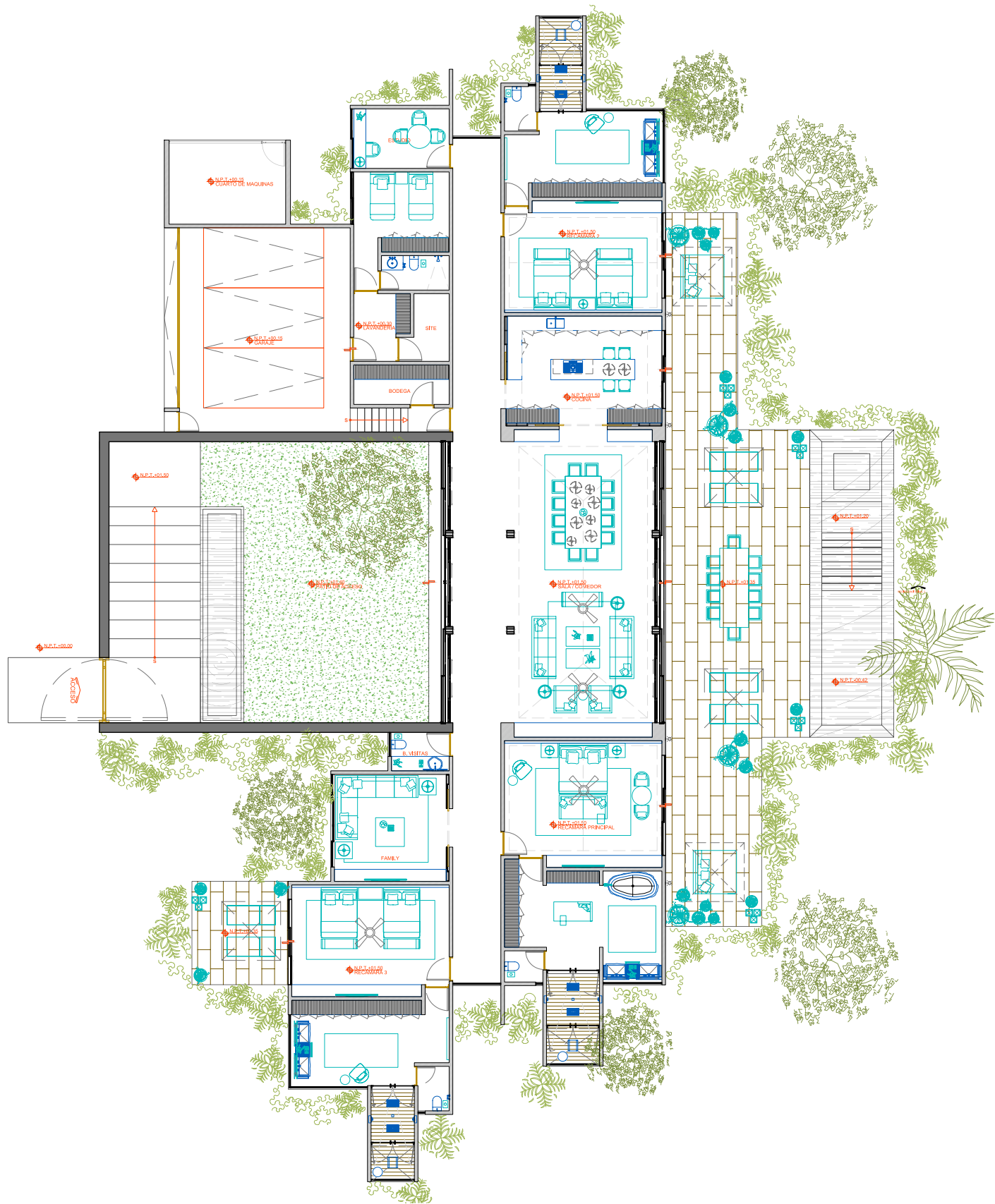
**TOTAL AREA** / 970 sqm (10,446.06 sqft)

Breezy afternoons. Laughter echoing through immense yet warm shared spaces. Savor true seclusion and become one with nature at our vast three-bedroom Family Villas. This vacation home serves as the ideal headquarters for a day full of adventures—and nocturnal get-togethers to share stories.





FLOOR PLAN  
FAMILY VILLA



\*This is a render and is subject to change





\*This is a render and is subject to change

Past the entrance staircase and access yard, you'll find the main hallway, which crosses the entire residence and brings together all the rooms. The first thing you'll see is the main hall, which houses the living room and dining room. This area is also connected to the pool deck through floor to ceiling windows and matching decorations.

Two of three bedrooms are located on this end of the house, and have access to the terrace as well. All bedrooms have a private bathroom and a walk-in closet. The kitchen, located on the left side, has a sliding door to allow the residents to close off or open and connect the kitchen to the main hall.







\*This is a render and is subject to change

## ROYAL VILLA

**5-BEDROOM** SINGLE-LEVEL VILLA WITH A 4-LEVEL OBSERVATORY TOWER.

**TOTAL AREA** / 2,302 sqm (24,667.14 sqft)

Let the dense vegetation be your safeguard from the outside world at Chablé's most exclusive villa. This five-bedroom residence comes alive with a unique blend of jungle views, contemporary architecture and upscale design. Its beauty definitely rivals the encompassing nature of the Yucatán jungle. To stay in or go out and explore?

There are no wrong answers.






FLOOR PLAN  
ROYAL VILLA







A large courtyard that frames the central patio and connects most rooms in the house, creating a smooth transition between indoors and outdoors. On the opposite end of the courtyard that stands parallel to the entrance, the main hall houses the living room, dining room, bar and library, which are connected to the pool terrace through floor to ceiling windows and matching decorations.

\*This is a render and is subject to change

The crown jewel of the Royal Villa is the 4-story tower by the plunge pool. It features a movie theater on the ground floor, a gym with top-of-the-line equipment on the first level, a private spa on the second floor, and an observatory with its own telescope on the top level, which guests can access either through stairs or a private elevator.



## CHABLE MEMBERSHIP

A WAY OF SAYING THANK YOU  
**FOR EMBRACING CHABLÉ**

Open the door to an across-the-board Chablé experience. As a homeowner, you'll have access to the Chablé Membership, which includes perks such as access to all hotel amenities, exclusive owner's discounts on all dining options and services on property, on top of seasonal activities.





# REDEFINING WELLNESS



This way to happiness. Chablé strives to redefine wellness as a lifestyle, not a quick fix to burnout. The Chablé philosophy is to revere the mind, body and soul. By living in harmony with nature and praising timeless traditions. Whether you’re looking to rest, find meaning or simply get away, Chablé lets nature and ancient knowledge guide you on a breezy journey to wellbeing.

Immerse yourself in the vibrant Yucatán cuisine, practice your shots on our golf course, enjoy a yoga session by the cenote or wander around our beautiful trails—our resort is yours to discover.



# CUISINE



## KI’OL

Wellness and health go hand in hand, and these values are at the heart of Ki’ol. This restaurant, named after the Mayan word for “healthy”, serves elaborate dishes that celebrate what nature has to offer. With fresh produce from our Ka’anche’s (Mayan gardens), local cuisine shines through, expanding the possibilities of well-known ingredients to fuel your daily adventures.

## IXI’IM

Ixi’im—which translates as “corn” in Mayan—is a refined oasis that offers Mexican cuisine with a local approach. Housed in the building that once held the machine room, Ixi’im must also be appreciated through its timeless construction style, which won the 2018 Prix Versailles, an award that celebrates the best in architecture and design around the world.







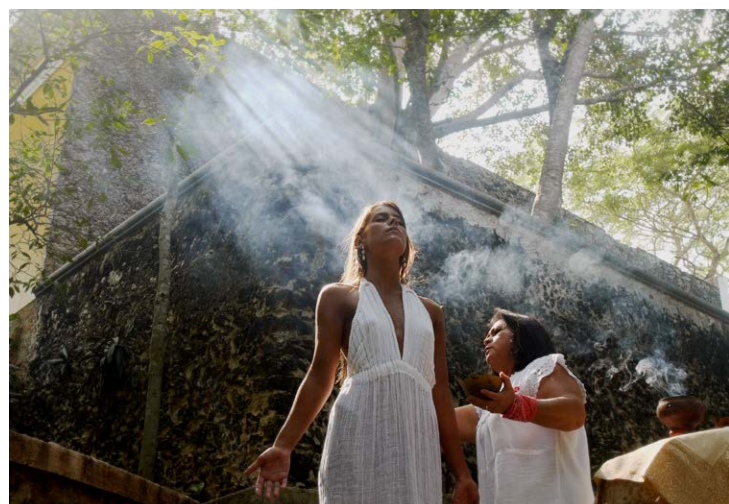
## SPA

From holistic happenings to salon services, the spa encloses a multitude of offerings to bring our commitment to redefining wellness home. After all, it encompasses everything that brings joy, peace and comfort, whether that means antique herbal treatments with a local healer, a relaxing meditation session or embellishing your skin. Based on a deep bond with nature and inspired by the cenote on-site, our spa aspires to soothe both your body and soul.



## BEEKEEPING

Bees are crucial to every ecosystem on the planet due to their work as pollinators, and have been threatened by pollution and changes to their habitat. Melipona bees, endemic to the Yucatán Peninsula, are regarded by Mayan people as a sacred species. Chablé Yucatán is home to a Melipona Bee Sanctuary, where local beekeepers make sure they thrive for decades to come.



## EXPERIENCES

Honor nature and the ancestral approaches to being one with the local flora and fauna. Make the most of your time at Chablé Yucatan with unique pursuits that will awaken your senses. From yoga sessions by the cenote to visiting a Mayan garden, there's something for everyone. Ride a bike around immense property, join a spiritual ceremony or enjoy some local delicacies brought to life by local cooks.







\*This is a render and is subject to change

## KIDS CLUB

CHABLÉ YUCATÁN IS A **CHILDREN-FRIENDLY** HOTEL-ALL  
OUR GUESTS ARE PART OF OUR FAMILY.

While they can enjoy basking in the pool, paying a visit to our edible garden or just wandering around, a Kids club is opening soon, and we look forward to helping the youngest redefine wellness too.

At our Kids Club, youngsters will have plenty of options to make the most of their stay. With a slew of indoor and outdoor activities, they'll engage in local mythology, learn more about nature, stay active and explore different channels to express themselves.

Whether your kid is interested in arts, sciences, nature or just wants to unwind and have fun like a regular child, every kid will bid farewell to Chablé Yucatán having seen something exceptional. We offer multiple workshops, from pottery to astronomy, from food to drama. If you have a budding history buff at home, they'll be thrilled to learn about the Mayan culture and legacy that permeates the resort.







\*This is a render and is subject to change

## THE FUTURE AT CHABLÉ

Chablé, a chain of high-end resorts in Mexico founded in 2003, currently manages and operates two properties located in the Riviera Maya: Chablé Yucatán and Chablé Maroma, as well as Casa Chablé, located in the Sian Ka'an Biosphere Reserve however, there are a handful of projects in development stages, namely Chablé Sea of Cortez and Casona 59 a Chablé Hotel. In the meantime, Chablé Yucatán has launched its ultra-luxury residences, offering a chance to turn the resort experience into a long-term engagement for its guests; Chablé Sea of Cortez will join it creating one-of-a-kind homes in the Baja California peninsula.







#### CONTACT US

KATYA ALVAREZ  
MX +52 999 739 4009  
[residences@chableyucatan.com](mailto:residences@chableyucatan.com)

Tablaje #642, Chocholá,  
C.P. 97816, Yucatán, México

[www.chablehotels.com/yucatan/residences/](http://www.chablehotels.com/yucatan/residences/)

[@hableresidences](#)